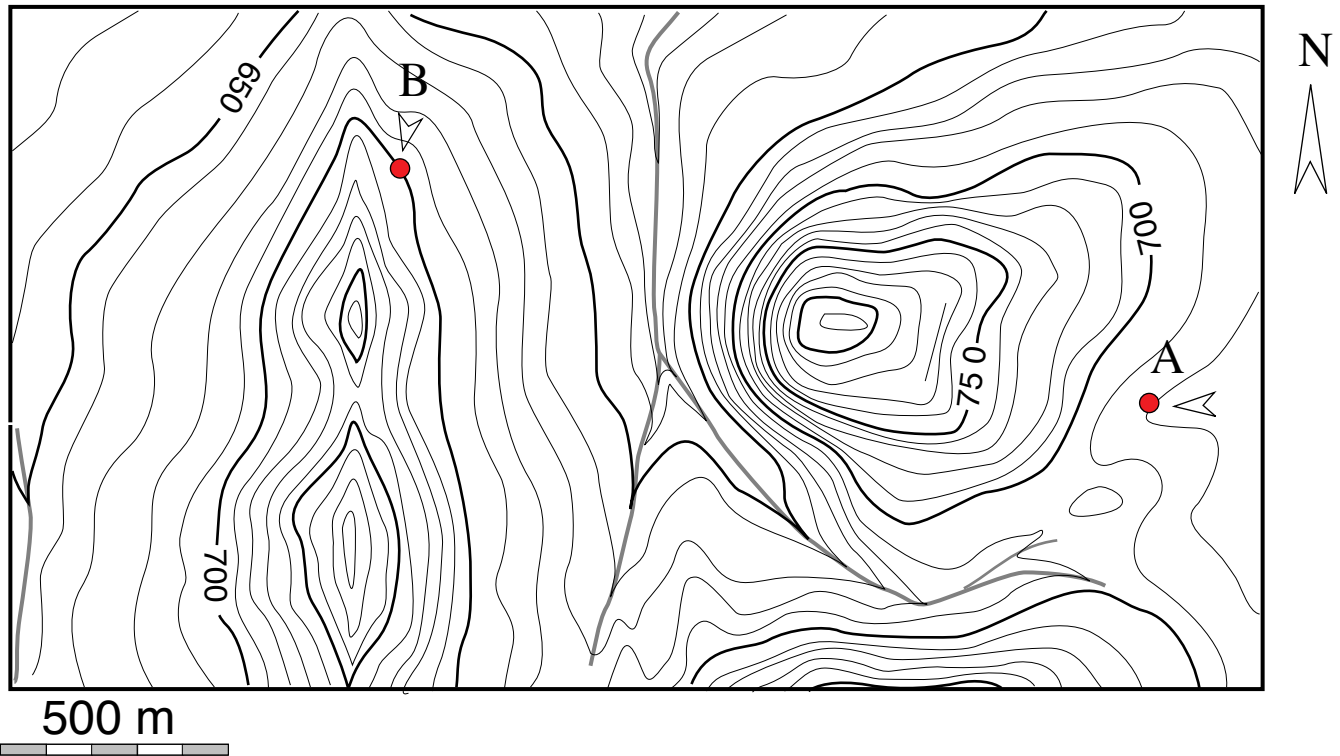


PRACTICAL 2: TOPOGRAPHIC PROFILES AND GEOLOGICAL PROFILES.

Exercise 3: At the location A, you have measured the strike-dip direction of a contact sandstone/mudstone: 105/42N. Construct the form line of that bedding plane assuming that it is a planar surface (no change in strike and dip). At the location B you have spotted the top surface of the sandstone layer, construct its form line and determine the thickness of the sandstone unit.



Exercise 4: You have measured at location A a fault: 078/25SSE and at location B the top of a quartzite unit 120m thick: 105/30NNE. Assuming that both the fault and the quartzite are planar, construct their respective form line and the trace of their intersection on the map. Using simple trigonometry determine its plunge and plunge direction of this intersection.

